

Realize the Future of Pathology: Your Digital Transformation Journey

Digital pathology is becoming mainstream as laboratories achieve meaningful efficiency and quality gains, adjust to new ways of working amid the pandemic, and lay the foundation for AI. And while digital pathology is improving physician satisfaction, it also requires a transformation — one that centers around your pathologists and involves your processes and technology ecosystem.

Here are the steps your laboratory can take to navigate the digital journey with confidence.

Determine the “why”



Draw on your experience as a pathologist or laboratory manager to determine how going digital will address your most important needs. Then, prioritize your use cases accordingly.

Related resources:

- Understand the trends driving pathology forward in our [2020 Digital Pathology Annual Report](#).
- Learn how digital pathology is improving the pathologist experience in a recent episode of the [“Zoomed In” podcast](#).

Make the case

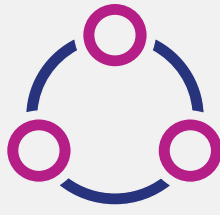


Build the support you’ll need across your team to carry out your journey. In addition to defining success criteria, demonstrate how digitization will benefit pathologists to secure their buy-in, and establish a business case and financial model for your administration.

Related resource:

- Read the latest clinical and economic evidence of AI-enabled digital pathology adoption in a [white paper from Dark Daily](#).

Choose your technology



From scanners to image management, select the technology solutions that best meet your use cases. As you do, consider how your ecosystem will integrate and the storage options available.

Related resource:

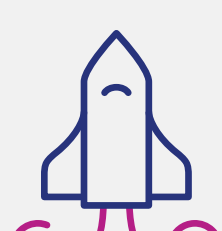
- Learn more about how Proscia’s [Concentriq® Dx digital pathology platform](#) is driving quality and productivity across leading pathology laboratories.

Prepare your laboratory

Determine how digital pathology will enhance — not disrupt — your familiar workflows and the steps you’ll need to take to get there. This includes mapping your workflows to your operations, defining an implementation plan, and addressing CAP, regulatory, and medical licensure requirements.



Train and validate



You’re just about ready to launch. But before you do, you’ll want to train your team and perform necessary validation.

Go live!



It’s time to celebrate, as your laboratory is finally up and running! Just **don’t forget** to continually evaluate your success based on the criteria you established in Step 2.

Scale and repeat



Ready to expand your implementation? Start again by determining the “why.”

Related resource:

- Hear from [pathology leaders at LabPON](#), the first laboratory in the world to reach 100% digital pathology diagnosis, on how they are scaling their operations with Concentriq Dx.

At Proscia, we combine today’s leading technology with our firsthand understanding of what matters most to pathologists, laboratory teams, and patients to help you navigate the digital pathology journey. Whether you’re just getting started or looking to scale your existing digital practice, we empower you at each step along the way to deliver on your commitment to excellent patient care.